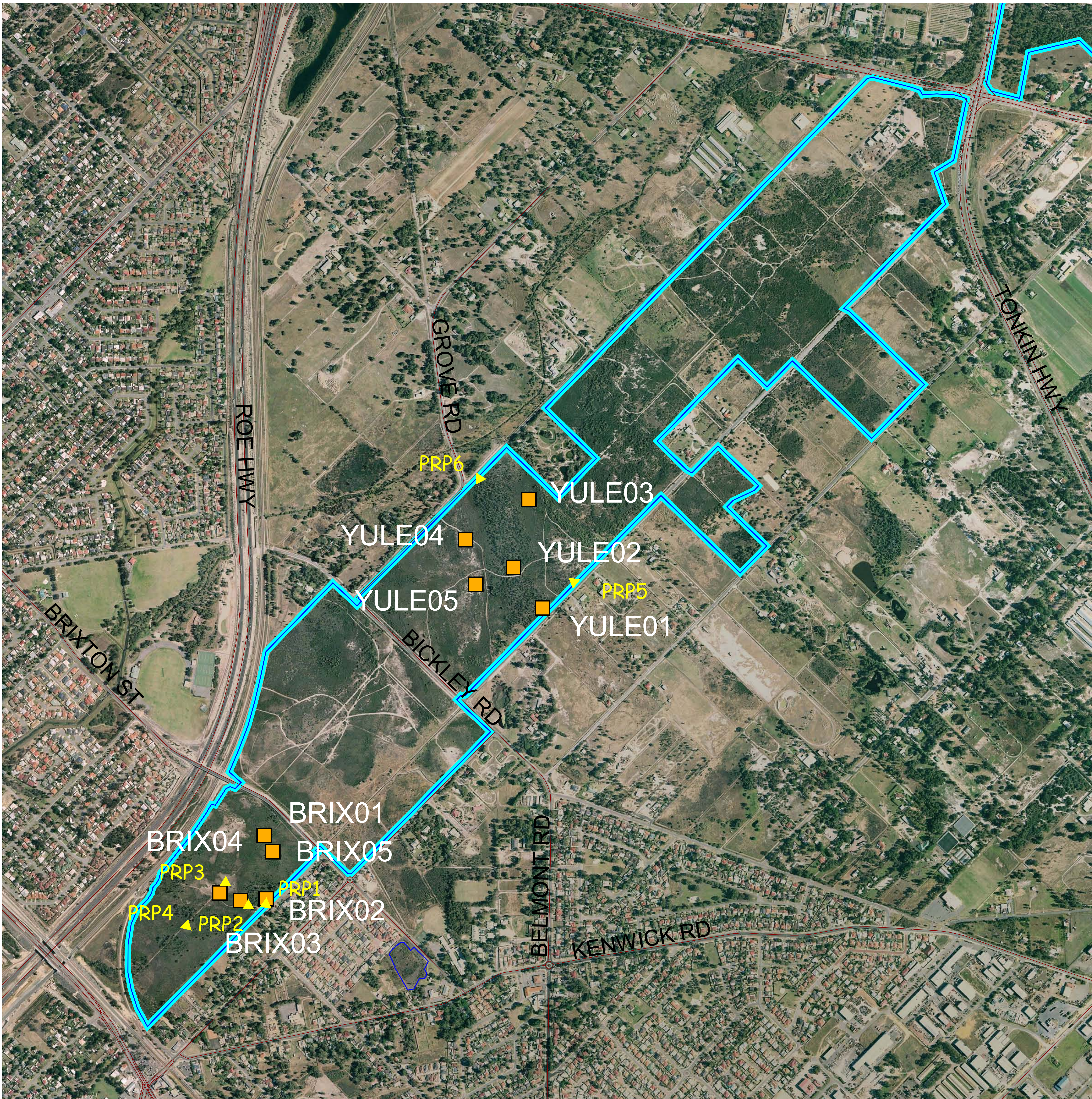
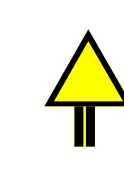




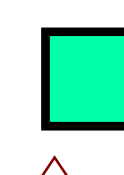
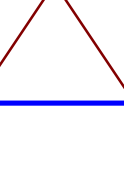




# Perth Region Plant Biodiversity Project

## BFS 387: Greater Brixton Street Wetlands, Kenwick



### Legend

-  Photo Reference Point
-  Floristic Survey Sites of the Perth Metropolitan Region
-  Keighery 1996
-  Griffin 1993 & Weston et al. 1992
-  Gibson et al. 1994
-  DEP 1996
-  Roads
-  Bush Forever Sites
-  Bush Forever Reference Sites

0 500 1000 Metres



Projection: Map Grid of Australia Zone 50  
 Datum: Geocentric Datum of Australia, 1994  
 Information derived from this map should be confirmed with the data custodian  
 acknowledged by the agency acronym in the legend.  
 Prepared by: E Harris, April 2006

Name	Custodian	Date	Scale	+/-
Photo Reference Points	DoE/CALM/WALGA	2005	1:2,000	5m
Floristic Survey Sites	DoE/CALM	2005	1:5,000	100m
Bush Forever Sites	DPI	2002	1:25,000	NA
Bush Forever Reference Sites	DoE/CALM/WALGA	2005	1:25,000	NA

