

# AGLG Success Story

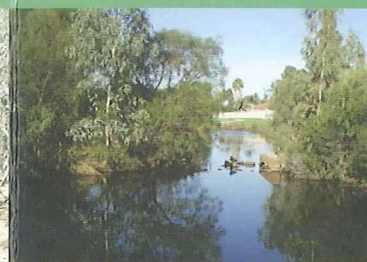


1999: McNeill Road Bridge site before AGLG and the Palomino Reserve Catchment Group commenced rehabilitation works

Throughout the past 10 years AGLG and the Palomino Reserve Catchment Group (PRCG) have worked together to rehabilitate the Palomino Reserve. The Reserve is located along the Wungong River which was designated public open space and vested within the City of Armadale in 1981. In 1999 the AGLG and PRCG took on the task to restore the foreshore and to date have successfully rehabilitated over 7 hectares.



2009: McNeill Road Bridge site



## Contact Details

Armadale Gosnells Landcare Group Inc.  
PO Box 51  
ARMADALE WA 6992

Community Landcare Coordinator  
Phone: 0412 713 528

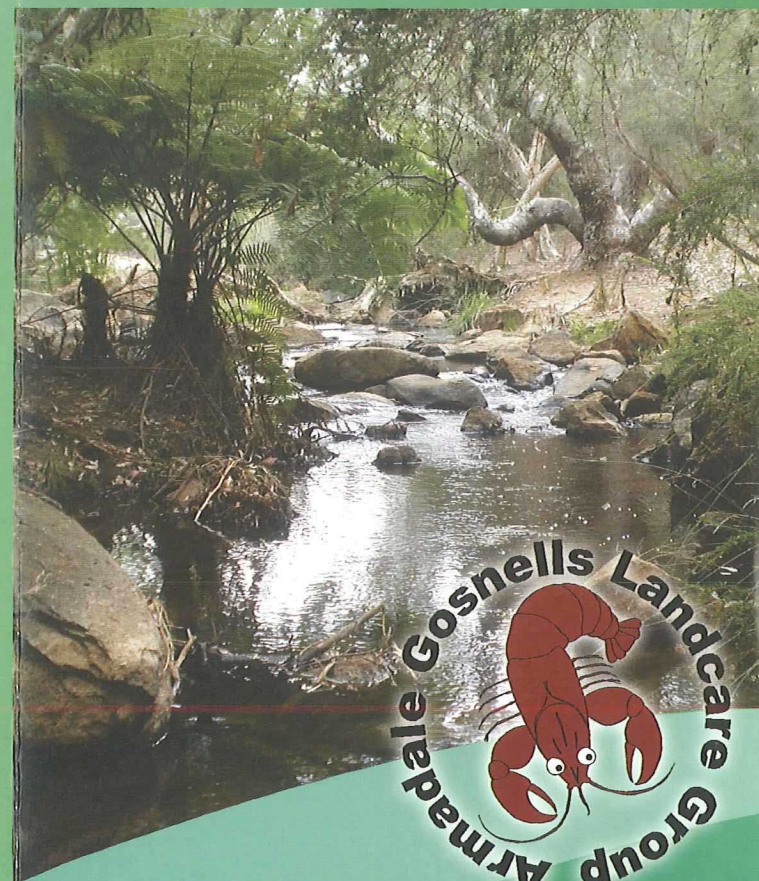
River Restoration Officer  
Phone: 0413 883 565

City of Armadale  
Phone: (08) 9399 0111

City of Gosnells  
Phone: (08) 9397 3000

Website: [www.sercul.org.au/aglg.html](http://www.sercul.org.au/aglg.html)

## Supported By



Armadale  
Gosnells  
Landcare Group



# Armadaale Gosnells Landcare Group

The Armadaale Gosnells Landcare Group (AGLG) is an independent, incorporated community led catchment group. AGLG operate within the Cities of Armadaale and Gosnells local government boundaries focusing on the Upper Canning, Southern and Wungong River catchments. The Group coordinates landcare planning, river restoration, bushland management, community action and awareness programs. AGLG is a not-for-profit organisation consisting of elected senior staff representatives of the Cities of Armadaale and Gosnells, government agencies, community groups, volunteers and landowners.



## Objectives of AGLG

- Improve water quality monitoring networks and distribution of data to guide future investments in water quality improvements.
- Ensure that river restoration and revegetation activities and other restoration/ landscape treatments of foreshores contribute to maintaining the ecological condition of AGLG's priority river areas.
- Ensure that priority areas of natural bushland are appropriately conserved, restored and managed to provide a sanctuary for native species.
- Identify the sources of sediment and extent of sedimentation so that an appropriate erosion and sediment management program can be established to protect priority river areas.
- Continually improve people's recognition of, and attitude to, local natural resource management issues that will provide leverage to a greater uptake of sustainable behaviours in the community.



## How can you help?

- Join us as a volunteer in planting and weed removal days
- Get involved with your local catchment or Friends of Group
- Plant local native plants in your garden which will increase biodiversity
- Use the right fertiliser for your garden at the right time of the year - Fertilise Wise
- Attend free 'Great Garden' workshops
- Become a member of the Armadaale gosnells Landcare Group



"Keep Australia Beautiful Award: City of Armadaale Mayor Linton Reynolds, Landcare Coordinator Crystal McIvor, City of Gosnells Mayor Olwen Searle, Chairperson of AGLG Cam Clay. Photo courtesy of the City of Gosnells."

## How to become a member

AGLG are seeking new volunteers to undertake activities such as tree planting and weeding. It's a perfect way to help the environment, meet new friends and enhance your community.

Phone AGLG or download a membership form from [www.sercul.org.au/aglg.html](http://www.sercul.org.au/aglg.html) to join one of your local environmental groups.