

LANDSDALE PARK

Bush Forever site 199
Area 15.78ha
Local authority; City of Wanneroo

Landform; Spearwood Dunes

Vegetation and Flora;
Vegetation Complex; Spearwood Dunes
Karrakatta Complex –Central and South

Floristic Community Type

20a *Banksia attenuata* woodlands over species-rich dense shrublands. This is a Threatened Ecological Community, (TEC) so called because of the extensive clearing of this floristic community type.

(Taken from Bush Forever Vol 2 page 332)

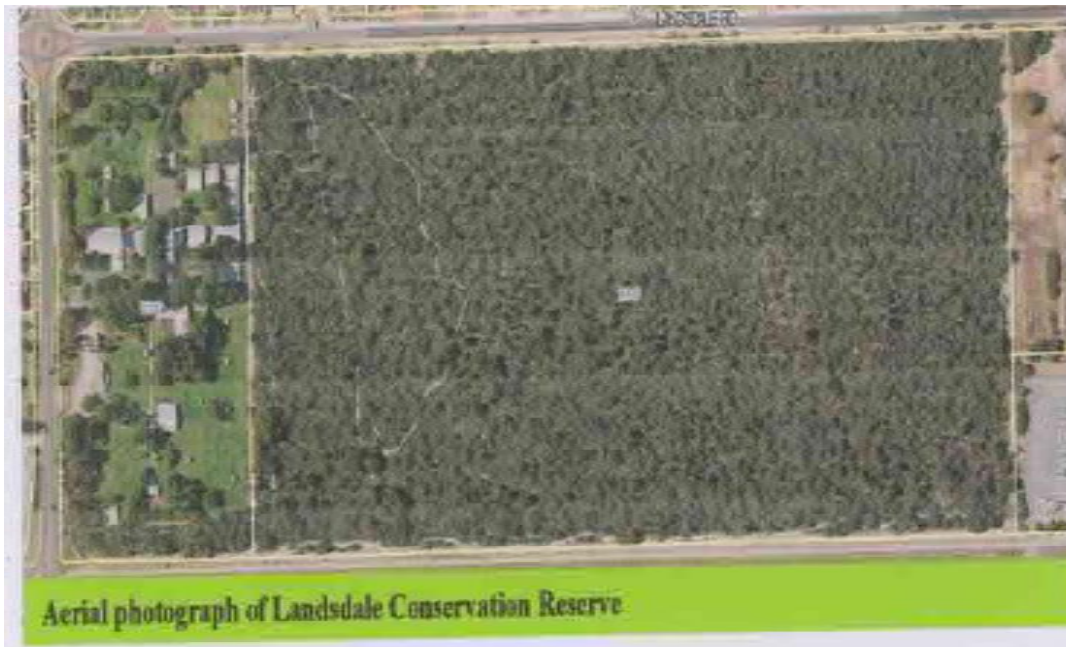
The banksia and jarrah bushland has a very rich understory

The condition of the bushland is noted as > 90% Excellent and <10% Very Good.

HISTORY

Landsdale Park is directly to the east of Landsdale Farm School. It is bounded by Landsdale Road to the north, Hepburn Avenue to the south, the farm school to the west and development to the east so its only direct linkage to other bushland areas is through the air. The bushland is part of Greenways 10.

The earlier future of the bushland was that it would be turned into playing fields but due to the efforts of the Landsdale Farm School principle at the time, Tim Saggars, and the Friends of Landsdale Bushland, and later with the cooperation and assistance of the City of Wanneroo, the bushland was set aside for a Conservation Park.



In 1995 with funding from the National Landcare Program, Landsdale Farm School and the Friends had the bushland fenced and a limestone interpretive walk trail constructed. The logo for the walk trail is the Port Lincoln ring-neck parrot. There are twelve numbered posts and a brochure with information corresponding to the numbers is available. The bushland walk trail is 660 metres long and it takes 20 to 45 minutes to walk the length of the trail.

There are two other walks associated with the Landsdale Farm School, each with its own logo; a pig for the farm animals walk and a sunflower for the garden walk.

Black-gloved Wallabies were present in the bushland but their future survival is unlikely. Quenda are present and there is a rich assemblage of reptiles.

Fire:

In the summer of 2009 a fire burnt 90% of the bushland. The bushland had had very few weeds and gladiolis had been kept down through pulling each year before flowering. The only spraying used in the bushland had been around the firebreaks. However after the fire, gladiolis grew prolifically from seeds in the soil. The City of Wanneroo and the Friends pulled gladioli out in a limited area and will have to continue for years.

Guided bush Walks

A guided walk is held on the first Saturday of each month from 8am to 9am. Meet the guide at the gateway on Landsdale Road at the north-west end of Landsdale Reserve.

Access

Access is restricted as the gates are locked so it is best to participate in the guided walk to see the bushland.

For enquiries ring Margaret Owen; 9381 1287.