

FRIENDS OF ALLEN PARK BUSHLAND GROUP

Spring 2016



Bushcare's Major Day Out

This year, BMDO's event combined with the annual Nightstalk on the 9th September. It was encouraging to see Allen Park's bushland supporting local wildlife. Spotters logged squabbling possums, bats, Tawny frogmouths, Spiny-tailed geckoes and the usual night time crawlies - spiders. Boobook owl calls were heard and not until walking home after the event did one make its presence known.

Encouraged by the species list recorded that night, another spotting activity was planned for the AGM on the 4th November. Members were in for a treat when guest speaker and guide, Joe Tonga, led a bat stalk with an array of tools that certainly captivated the small crowd. Joe has been in association with the group for many years, through feral bee control, and to building bird and bat boxes that can be seen hanging from trees around Allen Park. His enthusiasm for anything that walks, crawls and flies is shared on his night stalks.



Photo: J. Sharpe. Scorpion detected with UV 'black light' torch

To the delight of those on the walk, sensors picked up sound frequencies of Gould's wattle bat, and microbat (White striped Freetail bat). Sound wave patterns were visible on an iPad and to add to the excitement, a thermal imaging scope (a sensor camera) relayed images onto the screen. Possums and birds were detected and radiant heat from a beehive glowed from the crevice of a Tuart tree. A couple of additional toys gave even greater satisfaction to know that scorpions exist in Allen Park. It had to be one of the most interesting AGM activities the group has experienced.

Bird Life

Tawny frogmouths are frequently spotted in trees near The Hollow and they may attempt to sit unnoticed, but the trained eye may seek them out. Protective magpies and Willy wagtails may alert passers by as they saunter past, but these impressive birds are undaunted and continue to take shelter there.

It is also time to see the Rainbow bee-eaters back to breed and fledge their young. This is a most



Photo: N. Hills. Tawny frogmouth in Peppermint tree

vulnerable time for them as their choice of nest is in a burrow in the ground. For this reason dog owners are urged to exercise their dogs where they can be visible on the ovals. The burrows are located to the north of the bridge club car park.

In addition the warmer weather means that snakes are moving into areas where they can soak up some sun and may be close to paths. Pictured here is a large dugite photographed in the Seaward Corridor. There have been numerous sightings particularly closer to the coast. Dogs are therefore encouraged to be walked on a lead through the bushland path network.

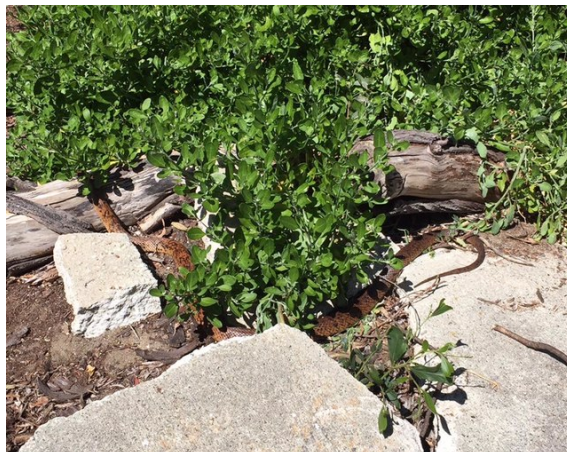


Photo: A. Prosser

Yellow admiral butterflies

Now resident in the UK, long time supporter and naturalist Robert Powell, paid a visit to a number of Native pellitory sites around Perth, including Allen Park. The reasonable rainfall over autumn and winter led to a good crop of habitat for the butterfly larvae. Much to everyone's delight, large areas of habitat were found in the Seaward Corridor supporting a range of sizes of larvae. The October bushcare day was spent collecting seed to disperse in new areas next year.



Photo: L Shaw. Yellow admiral larvae feeding on native pellitory



Photo: L Shaw. Wembley wax budding 6 October 2016

Wembley wax plants put on a show and now need your help as warmer weather approaches. Watering is proposed on a fortnightly basis, unless a decent rainfall event occurs.

The area in focus for this summer's watering schedule is alongside Sayer Street. There is a long hose that can access the site easily and many watering cans available for volunteers. It takes about an hour to complete; the time is entirely dependent on the number of volunteers. An 8am start means there's plenty time left in the day for other things. Can you help out and make it easier for those who do come along? Please register your name by calling 93847983 or email foapbg@gmail.com

Procedures of the AGM

As the year draws to a close, the committee say "so long" but not goodbye, to Joan Sharpe, a valued member. Joan's birding skills and enthusiasm for all things 'Allen Park' will be missed. The committee members were returned for another year of office, with Judy Herring: Secretary, Anne Allison: Treasurer, Lesley Shaw: President, Sue Hayes, John and Frances Gilmour also returning as social committee members.

Needless to say, over 910 hours of volunteer time was spent defending our patch following Defence Housing Australia's proposal to redevelop Seaward Village, and on-ground activities, namely planting and the less glamorous job of weeding following seemingly good yet average winter rains. The Green Growth Plan and Nedlands Draft Local Planning Strategy demanded a lot of scrutiny and submissions there were aplenty. Submissions were also made to proposals for the Shenton Park Rehabilitation Hospital site, Bold Park Management Plan, Banksia Woodlands recommendation for Threatened Ecological Community status, Underwood Avenue Bushland and a proposal for Scarborough Beach road realignment.

There were concerns about the future of the FOAPBG cottage when Council initially resolved to offer an alternative storage facility and to bulldoze it. Approaching 100 years, this cottage is the only original building in the Heritage Precinct and we will endeavour to have it fixed. This will mean working with Council to budget for repairs and for us to raise funds (through a grants program), to keep its position on the slope overlooking the park.

Plans for 2017

- Work with FOAP and the City of Nedlands to bring the Swanbourne Master Plan to fruition.
- The asbestos has been removed from the swale - so continue planting between Flyash Hill and the Seaward Corridor.
- Sayer Street - verge. Watering has begun and we ask for volunteers to help with watering.
- Cottage - stage repairs subject to funding.
- Consolidate areas around high quality vegetation zones.

End of year wind up

The year wraps up with one more monthly meeting - collecting Bridal creeper berries.

Please join us from 8-10 on Saturday 3rd December.

Meet at the cottage.

The morning's activity will be followed by the traditional bush brekkie. All welcome.

If you were unable to attend the AGM, membership fees are now due.

Activities will recommence early March 2016.

Best wishes for the coming festive season. Please be on the look out for any suspicious behaviour if you're out walking through Allen Park.

Please note individual membership fee is \$10 and family \$15. Your support is essential for the wellbeing of our bushland. Please fill out your details below and return to:

The Treasurer FRIENDS OF ALLEN PARK BUSHLAND GROUP INC. 16 Lynton Street, Swanbourne, 6010.
Membership: Individual (\$10) Family (\$15)

NAME:

ADDRESS:

.....

Email:

Tel: (Home) (Wk) (Mob)

Electronic fund transfers to: Friends of Allen Park Bushland Group BSB: 036 034 A/C.: 193802

Note: Please include your name in any EFTs.

