

Brooklands Drive, Henley Brook





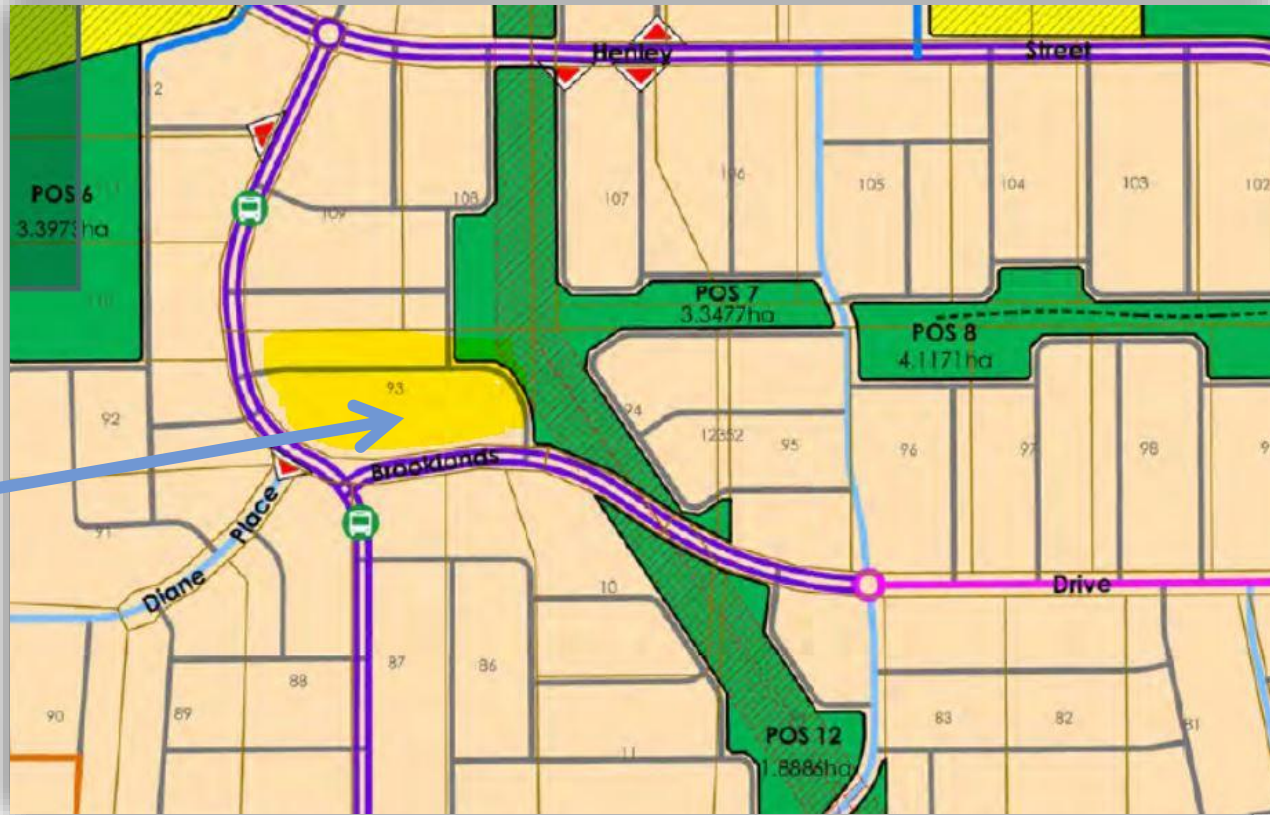
Our property in Henley Brook. Green, leafy, shady and semi-rural.





Trees surrounded our paddocks. This was the lifestyle we saved and worked for.





Home

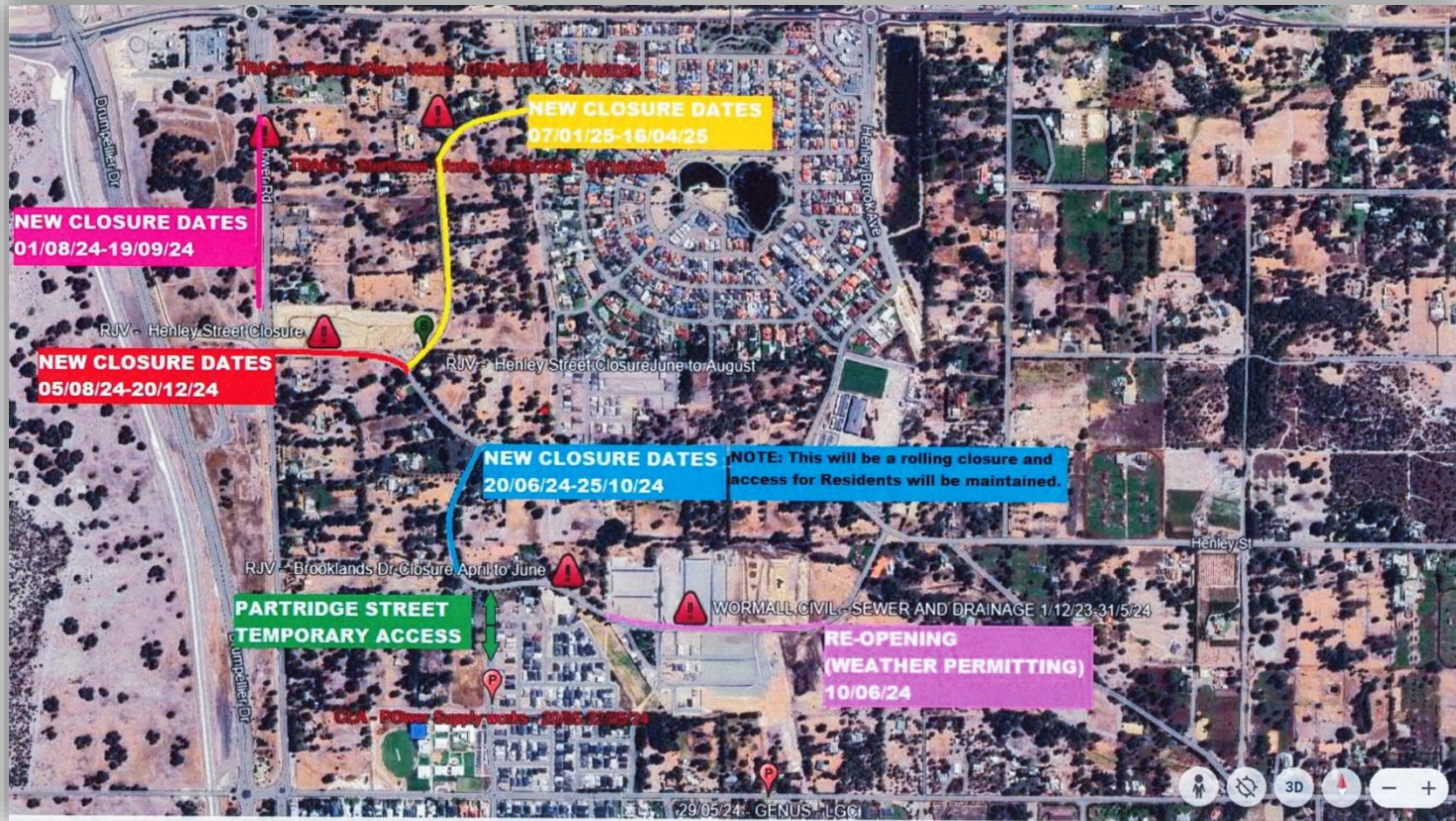
We found ourselves right in the middle of the development, with a road planned through our property.





As areas are cleared and developed, and houses being built, rubbish blows onto our property continuously.





Continuous, road closures, making it difficult to get home. Our road was closed for the installation of deep sewerage along our boundary.





Deep pits were dug to install a sewer pipe –
with multiple dewatering machines operating 24/7 for months.





Just one of several pits that were dug along the edge of our property. This is near our front gate.





The roots of several trees were cut to make an access track (green lines), the rubbish truck and postie often missed us.





The water was pumped out of the pits and into the stormwater system.





Trees on our eastern boundary nearest the first pit started to die first. The leaves dried out and dropped off very quickly.





Some species were more badly affected than others. More than 20 large trees were either dead or damaged.





We had the trees checked. The cause was disturbance of the groundwater.





One of the pits was contaminated with diesel spill.





The tree deaths followed around our boundary and along Brooklands Drive western end, where the pumps had been operating.





(Above) Before - the tree canopy was green and full, all around our boundary fenceline.

(Below) After - huge gaps in the canopy. Loss of shade and amenity.





Healthy, going, gone. Massive dead tree near our shed.
This has the potential to drop large branches on us and the horses.





The white pipe contains our internet cable. Our internet was cut at least 3 times during various works. The pits were huge and very deep.





At the same time the water was being pumped into the drain, there was severe flooding on Park Street properties, in the middle of summer.





We are left with many dead trees which constantly drop branches, especially during wind and storms.





Dead trees don't provide shade or habitat for wildlife and birds.

They also don't take up groundwater

